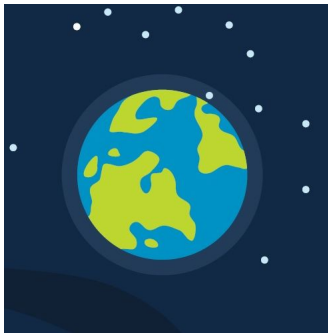




Welcome to our member e-bulletin for July!

This month we are talking about our Orbital Loans, our support to the staff at Kettering General Hospital, and the work we do with Lend With Care.



Orbital Loan limits increased

The limit on our popular Orbital Loan has recently increased to £3,000.

Thousands of Commsave members use the Orbital Loan in a similar way to an overdraft, providing easy access to funds to help cope with unexpected expenses.

We've also reduced



Supporting our local heroes

Over the last few months we've seen the incredible contribution that all kinds of key workers make to our society.

From our brilliant posties keeping the mail moving to government workers processing record numbers of benefit applications, we've all appreciated the vital



LendwithCare - making a difference

At Commsave, we want to make a difference wherever we can.

One way we do this is supporting LendwithCare – a charity that enables people in developing countries to work their way out of poverty.

Many Commsave members make a

the minimum repayments you need to make on the Orbital Loan, to help make borrowing even more affordable. Now, for every £500 limit you have, you only need to repay £6 a week or £25 a month.

If you are interested in applying for an Orbital loan, or if you want to apply to increase your existing limit, click the link below.

[Apply for a loan](#)

contribution our key workers make.

In recent weeks we've been saying a big thank you to staff at one of our local NHS hospitals in Kettering. Our Business Development Officer, Cat, has been distributing goody bags to staff all over the hospital, and we've had some fab feedback!

We'll be rolling out this idea to staff of other companies all through the summer!

[See more of our work at KGH!](#)

regular donation of £1 to LendwithCare, which we lend to people to buy goods or equipment for their businesses.

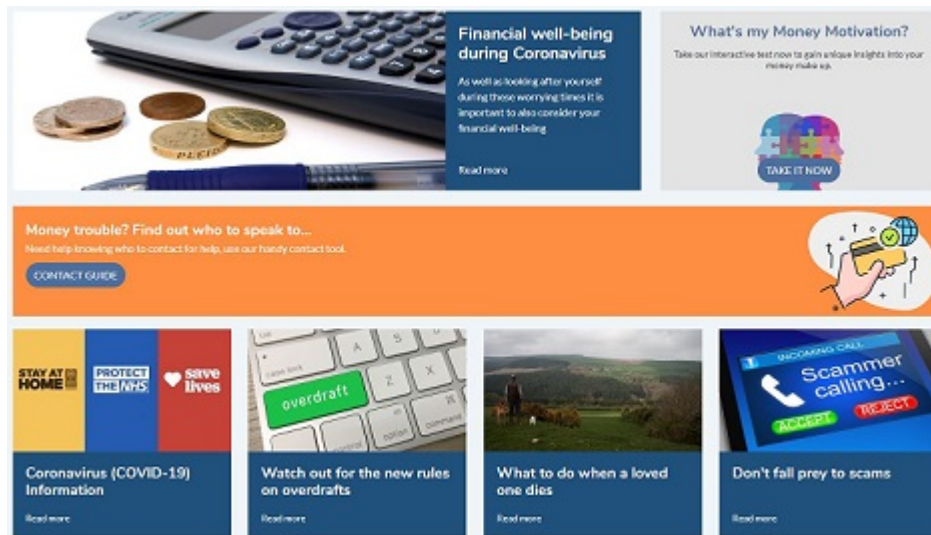
We have already helped more than 3,000 people with loans totalling over £15,000, creating jobs and making a lasting difference.

If you would like to support LendwithCare, please call us on 0303 0402 660.

[Find out more!](#)

Sign Up For CURight Today!

CURight is Commsave's dedicated online portal for all kinds of information and tips to help you manage your money effectively. Click the image below to sign up today!



Friends of Commsave Credit Union Lottery - Recent £150 First Prize Winners

July - Neelam Panesar of Slough
June - Theresa Blackmon of London
May - Adinarayana Kompalli of London



To review your marketing preferences, click [here](#) to login to your online account.
Under 'loans and services' select the 'update marketing preferences' option.

Copyright © 2020 Commsave Credit Union, All rights reserved.

Want to change how you receive these emails?
You can [update your preferences](#) or [unsubscribe from this list](#).