



All the latest from Commsave Credit Union!

We are sending you this message to let you know about several important opportunities related to your Credit Union membership.

In the run-up to Christmas we want to remind you about Commsave's loan products, as well as the Friends of Commsave Credit Union's forthcoming Lottery Mega Draw!

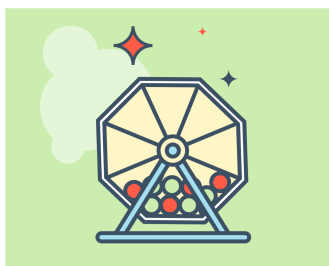
We also want to remind you about the new PrizeSaver Account, which more than 3,000 Commsave members have already signed up for!



Spread the cost of Christmas

We all know that Christmas can end up being a costly time of year. Presents, food, drink - it all adds up!

A Commsave loan is a great way to spread the cost. To give you an idea of how affordable it can be, a loan of £1,000 repaid over 37 weeks would cost just £30 a week!



Lottery Mega Draw!

The next lottery draw run by the 'Friends of Commsave Credit Union' is the annual 'Mega Draw'. This gives you the chance of winning a top prize of £2,500!

Any Commsave member can join the lottery, which costs just £1 a month.



Saving Feels Good, Winning Feels Great!

As a Commsave member, you will already know the importance of saving. Well now there's even more incentive to put your money away!

Commsave's new PrizeSaver Account offers you the chance to win a monthly cash prize through your savings!

You can save as little

This means you pay £88.37 in interest*.

Speak to one of our friendly team today on 0303 0402 660 to discuss your eligibility.

We are asking for applications and supporting documents to be submitted by Friday 20th December to help us get you a decision before Christmas.

* 26.8% APR

Apply Here!

There are 30 prizes in all, with the smallest prize being £250!

50% of the takings from each month's lottery draw are returned to members as prizes each month, with the other 50% contributing to the development costs of the Credit Union.

Join the lottery by 28th November to see if you can get your Christmas off to the perfect start!

Join the Lottery!

as £1 in the account and for every pound you save, up to £200, you will earn one entry into the monthly draw. The first prize each month is £5,000 and there are also 20 prizes of £20.

The first draw takes place on 16th December, so make sure you have opened your account and deposited by the end of November in order to be entered!

Don't forget that all of your savings with Commsave are protected by the FSCS, up to £85,000.

Find Out More!



Copyright © 2019 Commsave Credit Union, All rights reserved.

Want to change how you receive these emails?
You can [update your preferences](#) or [unsubscribe from this list](#).